

043512

RECEIVED
LARAMIE COUNTY
CHEYENNE, WY.

CERTIFIED LAND CORNER RECORDATION

'88 MAY 5 PM 1 31

DESCRIPTION OF CORNER EVIDENCE FOUND, AND ORIGINAL RECORD (If known)
Found no evidence of previous monumentation.

1/4 S.4 S.3
T.18N., R.67W.
6th P.M.

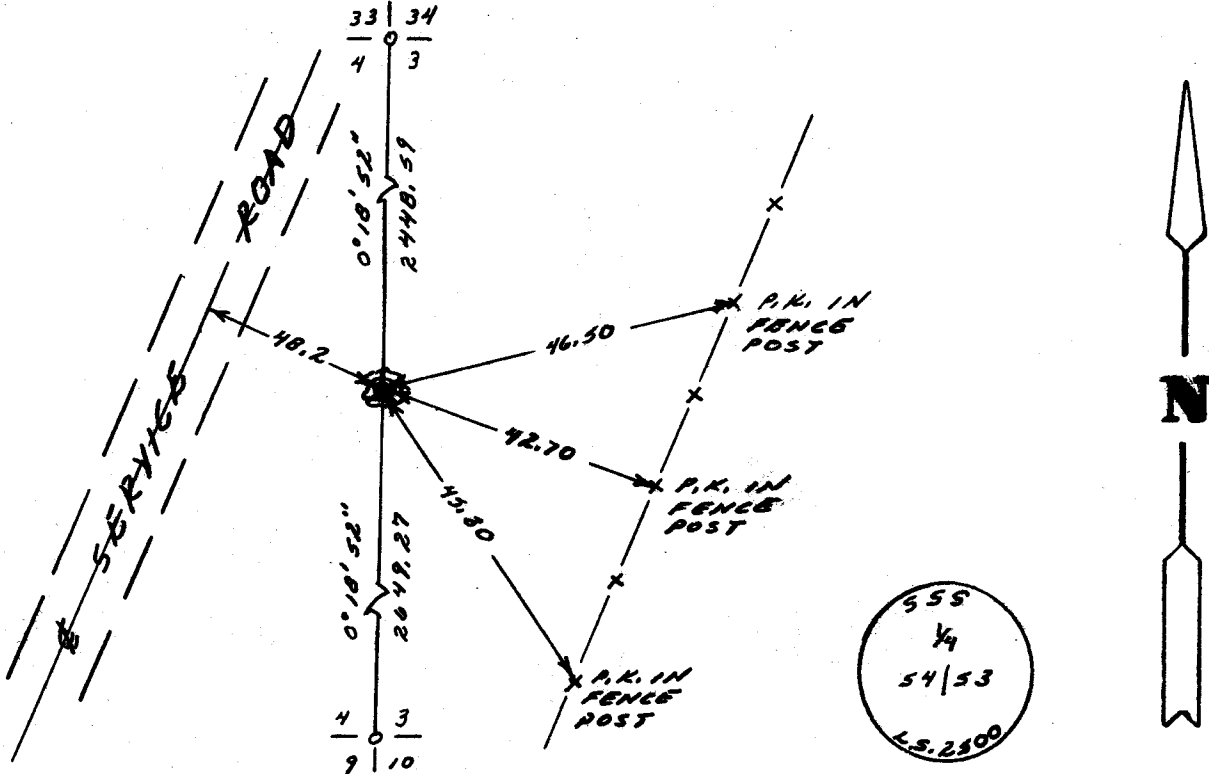
G.L.O. Record: Set granite 18"x8"x16" for 1/4 sec. cor.

DESCRIPTION OF MONUMENT AND ACCESSORIES ESTABLISHED
TO PERPETUATE THE ORIGINAL LOCATION OF THIS CORNER:

At the corner: Reset position W/5/8"x18" long rebar W/2" aluminum cap stamped as shown below projecting 0.1 feet above ground and encircled by a collar of stone at single proportionate distance between NW and SW cor section.

Accessories: See ties below.

SKETCH, WITH COURSE AND DISTANCE TO ADJACENT CORNER IF DETERMINED IN THIS SURVEY.
(May Sketch or Paste Reproduction on Reverse Side.)



I, John A. Steil certify that I have carefully performed or reviewed the work done on the diagrammed corner as reported on this recordation form and approve the same.

John A. Steil
Signature of Surveyor

L.S. 2500
Registration No.

STATE OF WYOMING,
Office of Clerk and Recorder,
County of Laramie

This "corner record" was filed for record on the 5th day of May, 1988, was noted on the cross-index plat and is assigned page No. 2028, in book No. 1259.

Janet C. Whitcomb
County Official

| | | | | | | | |
|-----------------|------|----|-----|----|-----|------|-----|
| Cross Index No. | C-18 | T. | 18N | R. | 67W | Mer. | 6th |
| | | T. | | R. | | Mer. | |
| | | T. | | R. | | Mer. | |
| | | T. | | R. | | Mer. | |
| | | T. | | R. | | Mer. | |
| | | T. | | R. | | Mer. | |
| | | T. | | R. | | Mer. | |